



ZIPPORAH

The Resource Management blueprint for the

# # CAN DO COUNCIL

What is a

## CAN DO council?

The 'can do' council is what every council should be aiming for! It's the council that does more with less. A 'can do' council finds the right solutions to ensure that not only can a swift reduction in expenditure be achieved through a single change, but the thought process is in place to ensure that any solution being introduced can offer more opportunities for change as the months and years go on. It's a council that is looking to ensure its solutions solve as many problems as possible in the fastest way. For many councils they look at the immediate need and miss the opportunity to fulfil longer term goals.

### **The 'can do' council thinks of today, tomorrow, and the future!**

The 'can do' council is a council that understands the key difference between cost and value - knowing that seeking value is a harder task but often brings greater reward. This is the council that wants a partnership that develops and seeks out the most talented suppliers to deliver on those partnerships. It's the council with vision, the council with drive, and the council who 'can do'... even if this is challenging. The council that led the way in innovation, whilst others follow. The councils that innovate their partners to consider new ideas benefiting all. The councils that have a plan and will to see it through.

# What is a 'can do' council achieving by managing its CIVIC CENTRES & COMMERCIAL VENUES?

A hot topic for all councils is how to make the most of their venues no matter how big or small. Whether it is a civic centre, a local theatre, a stadium, or a public hall – a 'can do' council has already optimised the use of these resources to maximise revenue generated from events taking place within the venue.

## Do more with less

'Can do' councils are the epitome of 'does more with less.' Give them a civic centre? They offer the space to the public for hot desking and hybrid working capabilities. Give them an auditorium? They will add a projector and call it a cinema for the night charging £10 per ticket. There is nothing more important for a 'can do' council than ensuring that their resources are returning value for their council tax-paying citizens.

## Commercial space management sets apart a 'can do' council from a 'cannot' council!

Running multiple events throughout the year within several venues could prove complex for any ordinary council. But not a 'can do' council. Complicated charging structures? No problem – the council has a comprehensive system in place that can automatically calculate charge bands to ensure citizens and organisations are charged correctly the first time – no manual intervention or complaints coming through to your customer service.

A 'can do' council is constantly sourcing ways to not only increase revenue for the council – but use that revenue to build a city, a town, or a county that they as a governing body can be proud of. Council events taking place within commercial spaces will ultimately require staff to help run the event – creating ample job opportunities for those within the community both hosting the event and providing event services. A 'can do' council always looks for ways to give back to the community which is why derelict, unused councils spaces are not part of the 'can do' council agenda... And never will be.



# How can Zipporah help TRANSFORM your council?

Firstly, Zipporah wants to give you complete control of your venues – from creating events from start to finish to set up conference centres for internal and external meetings. We want you to have that flexibility and control to make the most of your large-scale venues as well as your smaller, local establishments. Facility management of your spaces allows you to offer events and services that can be carefully curated from concept and creation to delivery and aftercare. A ‘can do’ council is proud of its commercial spaces so maintaining that quality is of the highest importance. Zipporah enables management teams, day/night staff, maintenance workers, and any other staff member to gain full access to the daily task management functionality – allowing teams to be in control of their daily schedules and what tasks are required of them.

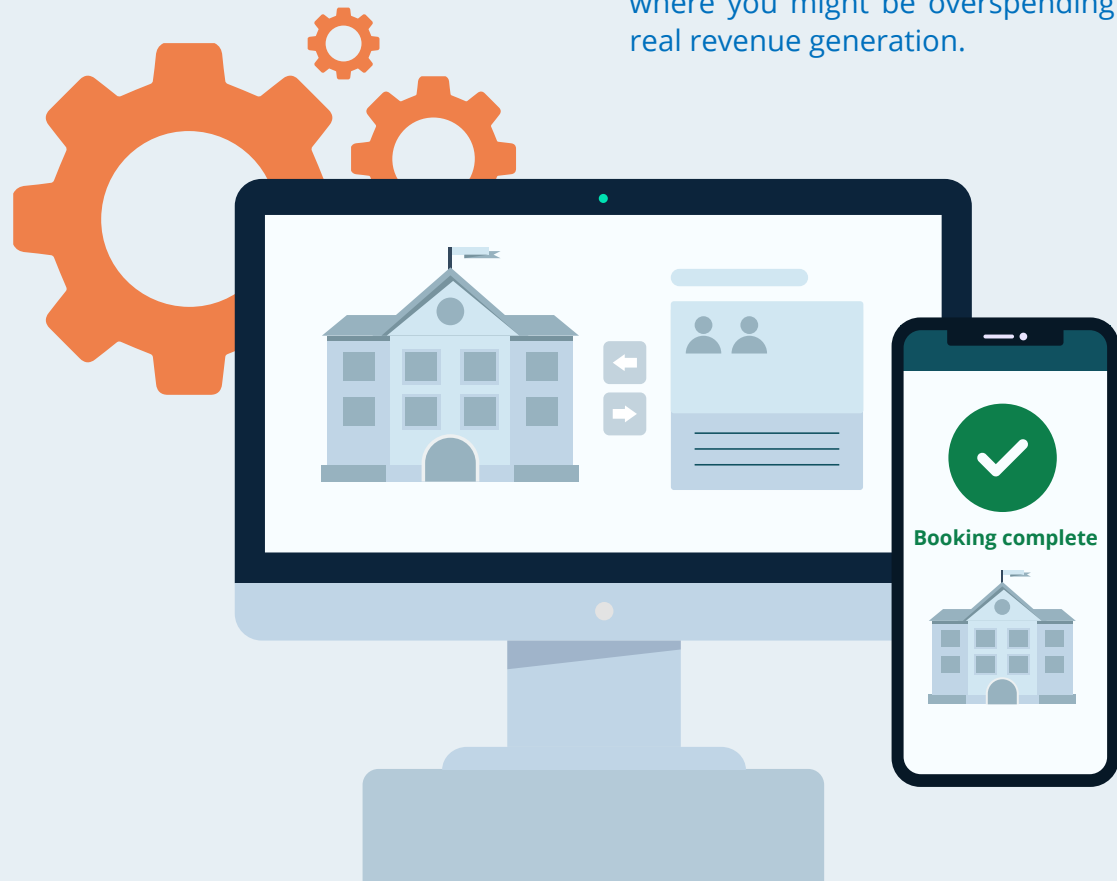
## Versatility when and where you need it

Zipporah understands that each resource, each venue, and each accommodation type may boast a different charging method or charge band – some may be free charity events that still have a capacity limit; some may require a 50% deposit upfront, and some may increase in price based on add-ons such as catering or excursions. These will all be set up by you with the option to make simple edits should anything change – no mat-

ter the complexity of the charging structure, you can feel confident that when set up, the Zipporah solution will ensure all costs are calculated correctly and minimise the risk of crucial mistakes of under or overcharging, that can result in an unnecessarily time-consuming task for your teams to rectify.

## All reports, all KPIs, all in one place

Budget targets and goals for your venues can easily be determined with the help of the Zipporah dashboard reporting suite. Review reports for all KPI monitoring from income reports to attendance reports or yearly/weekly comparative reports. Having instant access to all this key data allows you to decipher where you are making money, i.e what venues are popular but also where you might be overspending without any real revenue generation.



# Your system, YOUR DECISIONS

The Zipporah graphic-led user interface ultimately enhances the user experience. Whether you are booking a meeting room, a rehearsal space, an annual conference with side rooms, or even a theatre seat – the interactive graphical floorplan opens up a world of visual opportunities to amplify that user experience. Let your users pick their resource with a visual representation of the location within the building, proximity to amenities, or even just to choose who they wish to sit next to. We know full well that room layouts may change, a new parking structure could be built or a large-scale room becomes a smaller room, which is why Zipporah puts the power of the interactive floor plans in your hands. No need to come to us when changes are put in play. Zipporah sets you up ready to go with the knowledge for making those adjustments and setting up new resources without intervention from us.

## So, what else can you expect from the system?

- Allocate staff to activities by applying costing and timesheets – employee resources are just as important as facility resources, so, why not automate the financial management of your staff, ensuring no mistakes come payday?
  - Intelligent integrations allow us to create an invoice file that can be sent to your finance systems to create an invoice. We can then allow for the system to receive invoice data back from your finance system (of invoices requiring payment) which will allow a customer to enter their invoice number and pay it online.
  - Produce letters and attach documents to emails for signatures – cut costs and save money with no postage fees by sending out paper tickets or liability contracts.
  - Multiple calendar views and graphical availability options to suit you – Easily view your daily, weekly, and yearly calendars all in one place with colour coding, integration with Outlook, and task management.
  - Includes online ticket booking – allow your customers to pre-purchase tickets for events all paid for in advance and immediate confirmation. Take it a step further. Zipporah allows for QR codes to be sent and used as an entry to those events without the need for physical tickets.
  - Includes accommodation bookings for venues with bedrooms – If accommodation plays a part in your conference days, incorporate both within the booking process, allowing attendees to book a space at the event and where they will rest their heads in one swift booking.
  - Produce attendance lists for events and check-in details for accommodation – give your staff easy access to all attendee lists to monitor arrivals that can be accessed on a simple tablet device.
- As with any Zipporah system, everything is controlled and defined by you.
- Build the system that you need!**
- All under your control,  
all the time**

